



India Meteorological Department  
(Ministry of Earth Sciences)

BULLETIN NO.: 13 (ARB/01/2021)

TIME OF ISSUE: 0330 HOURS IST

DATED: 16.05.2021

FROM: INDIA METEOROLOGICAL DEPARTMENT (FAX NO. 24643965/24699216/24623220)

TO: CONTROL ROOM, NDM, MINISTRY OF HOME AFFAIRS (FAX.NO. 23092398/23093750)

CONTROL ROOM NDMA (FAX.NO. 26701729)

CABINET SECRETARIAT (FAX.NO.23012284, 23018638)

PS TO HON'BLE MINISTER FOR S & T AND EARTH SCIENCES (FAX NO.23316745)

SECRETARY, MOES (FAX NO. 24629777)

H.Q. (INTEGRATED DEFENCE STAFF AND CDS) (FAX NO. 23005137/23005147)

DIRECTOR GENERAL, DOORDARSHAN (23385843) DIRECTOR GENERAL, AIR (23421101, 23421105, 23421219)

PIB MOES (FAX NO. 23389042)

UNI (FAX NO. 23355841)

D.G. NATIONAL DISASTER RESPONSE FORCE (NDRF) (FAX NO. 26105912, 2436 3260)

DIRECTOR, PUNCTUALITY, INDIAN RAILWAYS (FAX NO. 23388503)

CHIEF SECRETARY, KERALA (FAX NO. 0471-2327176)

ADMINISTRATOR, LAKSHADWEEP ISLANDS (FAX NO. 0413-262184)

CHIEF SECRETARY, KARNATAKA (FAX NO. 080-22258913)

CHIEF SECRETARY, GOA (FAX NO. 0832-2415201)

CHIEF SECRETARY, MAHARASHTRA (FAX NO. 022- 22028594)

CHIEF SECRETARY, GUJARAT (FAX NO. 079-23250305)

CHIEF SECRETARY, DAMAN & DIU (FAX NO. 0260-2230775)

CHIEF SECRETARY, DADRA & NAGAR HAVELI (FAX NO. 0260-2645466)

CHIEF SECRETARY, TAMIL (FAX NO. 044-25672304)

**Sub: Severe Cyclonic Storm "Tauktae" (pronounced as Tau'Te) over Eastcentral Arabian Sea:  
Cyclone Alert for Gujarat & Diu coasts (Yellow message)**

The **Severe Cyclonic Storm "Tauktae" (pronounced as Tau'Te)** over eastcentral Arabian Sea moved nearly northwards with a speed of about 11 kmph during past 06 hours and lay centred at 2330 hours IST of yesterday, the 15<sup>th</sup> May, 2021 over eastcentral Arabian Sea near latitude 14.4°N and longitude 72.7°E, about 170 km southwest of Panjim-Goa, 520 km south of Mumbai, 760 km south-southeast of Veraval (Gujarat) and 890 km south-southeast of Karachi (Pakistan).

It is very likely to intensify into a Very Severe Cyclonic Storm during next 03 hours and intensify further. It is very likely to move north-northwestwards and reach Gujarat coast in the evening hours of 17<sup>th</sup> & cross Gujarat coast between Porbandar & Mahuva (Bhavnagar district) around 18<sup>th</sup> May early morning.

Forecast track and intensity are given in the following table:

| Date/Time(IST) | Position<br>(Lat. °N/ long.<br>°E) | Maximum sustained surface wind<br>speed (Kmph) | Category of cyclonic<br>disturbance |
|----------------|------------------------------------|------------------------------------------------|-------------------------------------|
| 15.05.21/2330  | 14.4/72.7                          | 110-120 gusting to 130                         | Severe Cyclonic Storm               |
| 16.05.21/0530  | 15.0/72.7                          | 120-130 gusting to 145                         | Very Severe Cyclonic Storm          |
| 16.05.21/1130  | 15.8/72.4                          | 130-140 gusting to 155                         | Very Severe Cyclonic Storm          |
| 16.05.21/1730  | 16.5/72.0                          | 140-150 gusting to 165                         | Very Severe Cyclonic Storm          |
| 16.05.21/2330  | 17.3/71.5                          | 145-155 gusting to 170                         | Very Severe Cyclonic Storm          |
| 17.05.21/1130  | 18.9/70.8                          | 150-160 gusting to 175                         | Very Severe Cyclonic Storm          |
| 17.05.21/2330  | 20.2/70.5                          | 150-160 gusting to 175                         | Very Severe Cyclonic Storm          |
| 18.05.21/1130  | 21.7/70.6                          | 90-100 gusting to 110                          | Severe Cyclonic Storm               |
| 18.05.21/2330  | 23.4/71.3                          | 50-60 gusting to 70                            | Deep Depression                     |
| 19.05.21/1130  | 25.1/72.0                          | 30-40 gusting to 50                            | Depression                          |

Spatial rainfall distribution: Isolated: <25%, A few: 26-50%, Many: 51-75%, Most: 76-100%

Rainfall amount (mm): Heavy rain: 64.5 – 115.5, Very heavy rain: 115.6 – 204.4, Extremely heavy rain: 204.5 or more.

## Warnings:

### (i) Rainfall:

- **Kerala:** Light to moderate rainfall at many places with heavy to very heavy falls at isolated places on 16<sup>th</sup> and heavy falls at isolated places on 17<sup>th</sup> May.
- **Karnataka (coastal & adjoining Ghat districts):** Light to moderate rainfall at most places with heavy to very heavy falls at isolated places on 16<sup>th</sup>.
- **Konkan & Goa:** Light to moderate rainfall at most places with heavy to very heavy falls at a few places over Konkan & Goa & adjoining Ghat areas on 16<sup>th</sup> and heavy falls at isolated places on 17<sup>th</sup> May over north Konkan.
- **Gujarat:** Light to moderate rainfall at many places very likely to commence over coastal districts of Saurashtra from 16<sup>th</sup> May afternoon, with heavy to very heavy falls at isolated places over Saurashtra & Kutch and Diu and extremely heavy falls at isolated places on 17<sup>th</sup> and with heavy to very heavy falls at a few places over Saurashtra & Kutch and Diu with extremely heavy falls ( $\geq 20$  cm) at isolated places on 18<sup>th</sup>.
- **Rajasthan:** Light to moderate rainfall at many places with heavy to very heavy falls at isolated places very likely over south Rajasthan on 18<sup>th</sup> & over Rajasthan on 19<sup>th</sup> May.

### (ii) Wind warning

- Gale wind speed reaching 110–120 kmph gusting to 130 kmph is prevailing over eastcentral Arabian Sea. It is likely to increase over eastcentral Arabian Sea becoming 120-130 kmph gusting to 145 kmph from 16<sup>th</sup> May morning.
- Gale winds speed reaching 60-70 kmph gusting to 80 kmph along & off Maharashtra –Goa coasts on 16<sup>th</sup> & 17<sup>th</sup> May.
- Squally wind speed reaching 40-50 kmph gusting to 60 kmph likely over northeast Arabian Sea and along & off south Gujarat & Daman and Diu coasts on 17<sup>th</sup> morning and gradually increase becoming Gale winds speed reaching 150-160 kmph gusting to 175 kmph over northeast Arabian Sea and along & off Saurashtra & Kutch coasts (Porbandar, Junagarh, Gir Somnath, Amreli) and 120 -150 kmph gusting to 165 kmph over Devbhoomi Dwarka, Jamnagar, Bhavnagar districts of Gujarat from early hours of 18<sup>th</sup>.

### (iii) Sea condition

- Sea condition over eastcentral Arabian Sea will be very high to Phenomenal on 16<sup>th</sup> May and over northeast Arabian Sea on 17<sup>th</sup> & 18<sup>th</sup> May.
- Sea conditions will be very rough to High along & off Maharashtra–Goa coasts on 16<sup>th</sup> May. It is very likely to be very rough to High along & off south Gujarat coast from 17<sup>th</sup> May morning and very high to Phenomenal from 17<sup>th</sup> midnight.

### (iv) Storm surge warning

Tidal wave of about 1-2 m above astronomical tide is likely to inundate coastal areas of Morbi, Kutch, Devbhoomi Dwarka & Jamnagar districts and 1-2 meters along Porbandar, Junagarh, Diu, Gir Somnath, Amreli, Bhavnagar and about 1m over the remaining coastal districts of Gujarat during the time of landfall.

### (v) Fishermen Warning

- Total suspension of fishing operations over eastcentral Arabian Sea and along & off Karnataka-Goa–Maharashtra coasts.
- Total suspension of fishing operations over northeast Arabian Sea and along & off Gujarat coast from 17<sup>th</sup> May.

**Spatial rainfall distribution: Isolated: <25%, A few: 26-50%, Many: 51-75%, Most: 76-100%**

**Rainfall amount (mm): Heavy rain: 64.5 – 115.5, Very heavy rain: 115.6 – 204.4, Extremely heavy rain: 204.5 or more.**

- The fishermen are advised not to venture into eastcentral Arabian Sea along & off Karnataka coast, eastcentral Arabian Sea and along & off Maharashtra – Goa coasts and into eastcentral & adjoining northeast Arabian Sea along & off Gujarat coast till 18<sup>th</sup> May.
- Those who are out at Sea over north Arabian Sea are advised to return to the coast.

**(vi) (A) Damage Expected over Kutch, Porbandar, Junagarh, Gir Somnath, Amreli, Jamnagar & Bhavnagar districts of Gujarat:**

- Total destruction of thatched houses/ extensive damage to kutcha houses. Some damage to pucca houses. Potential threat from flying objects.
- Bending/ uprooting of power and communication poles.
- Major damage to Kutcha and Pucca roads. Flooding of escape routes. Minor disruption of railways, overhead power lines and signaling systems.
- Widespread damage to salt pans & standing crops,. Blowing down of bushy trees.
- Small boats, country crafts may get detached from moorings.
- Visibility severely affected.

**(vi) (B) Damage Expected over Devbhoomi Dwarka, Rajkot, Botad & Morbi districts of Gujarat:**

- Major damage to thatched houses/ huts. Roof tops may blow off. Unattached metal sheets may fly.
- Minor damage to power and communication lines.
- Major damage to Kutcha and some damage to Pucca roads. Flooding of escape routes.
- Breaking of tree branches, uprooting of large avenue trees. Moderate damage to banana and papaya trees. Large dead limbs blown from trees.
- Major damage to coastal crops.
- Damage to embankments/ salt pans.

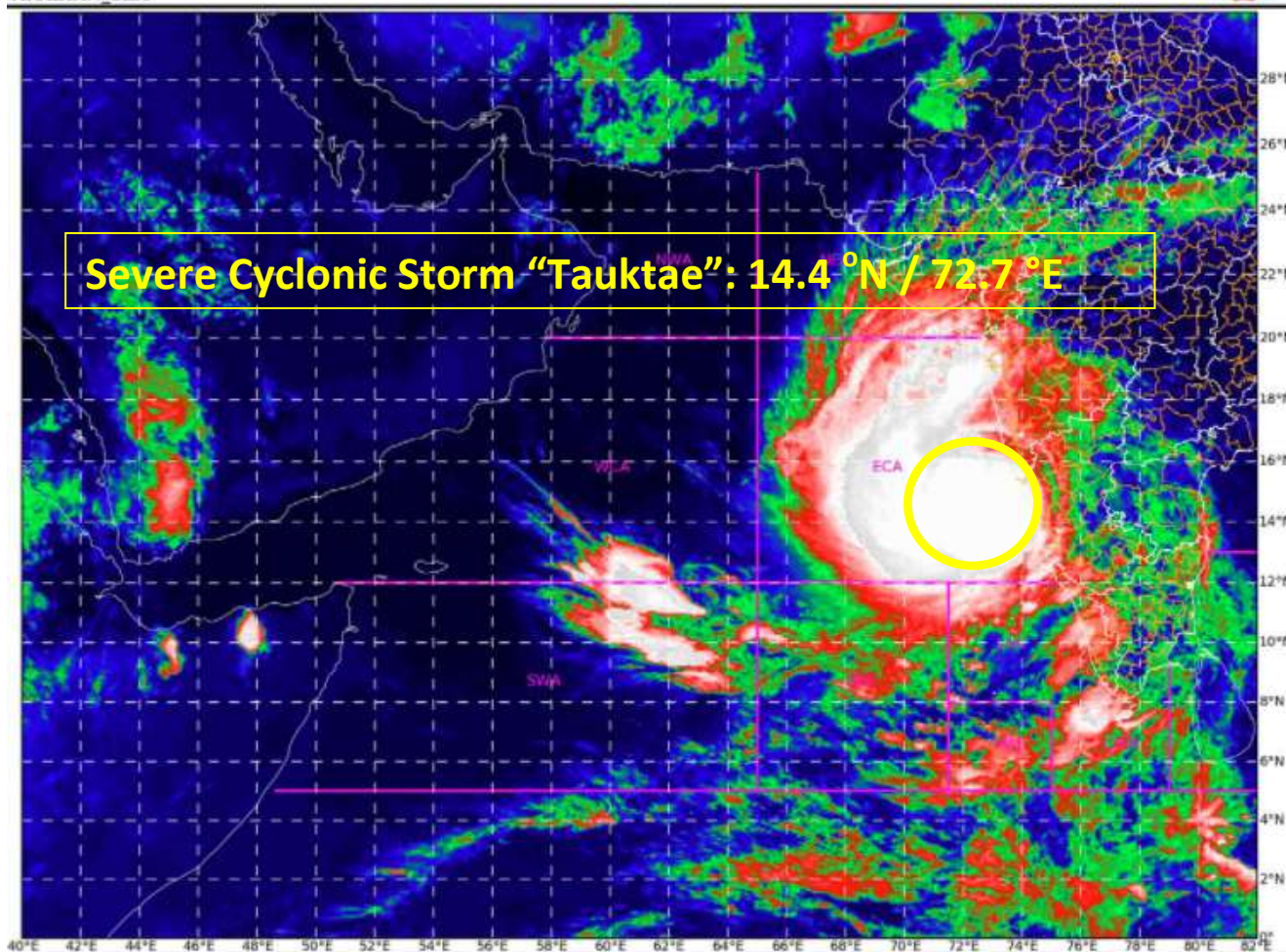
**(vii) Action Suggested:**

- Total suspension of fishing operations.
- Judicious regulation of rail and road traffic.
- People in affected areas to remain indoors.
- Movement in motor boats and small ships unsafe.

The next bulletin will be issued at 0530 hrs IST of today, the 16th May, 2021.

**(DR Pattanaik)**  
**Scientist-F, RSMC, New Delhi**

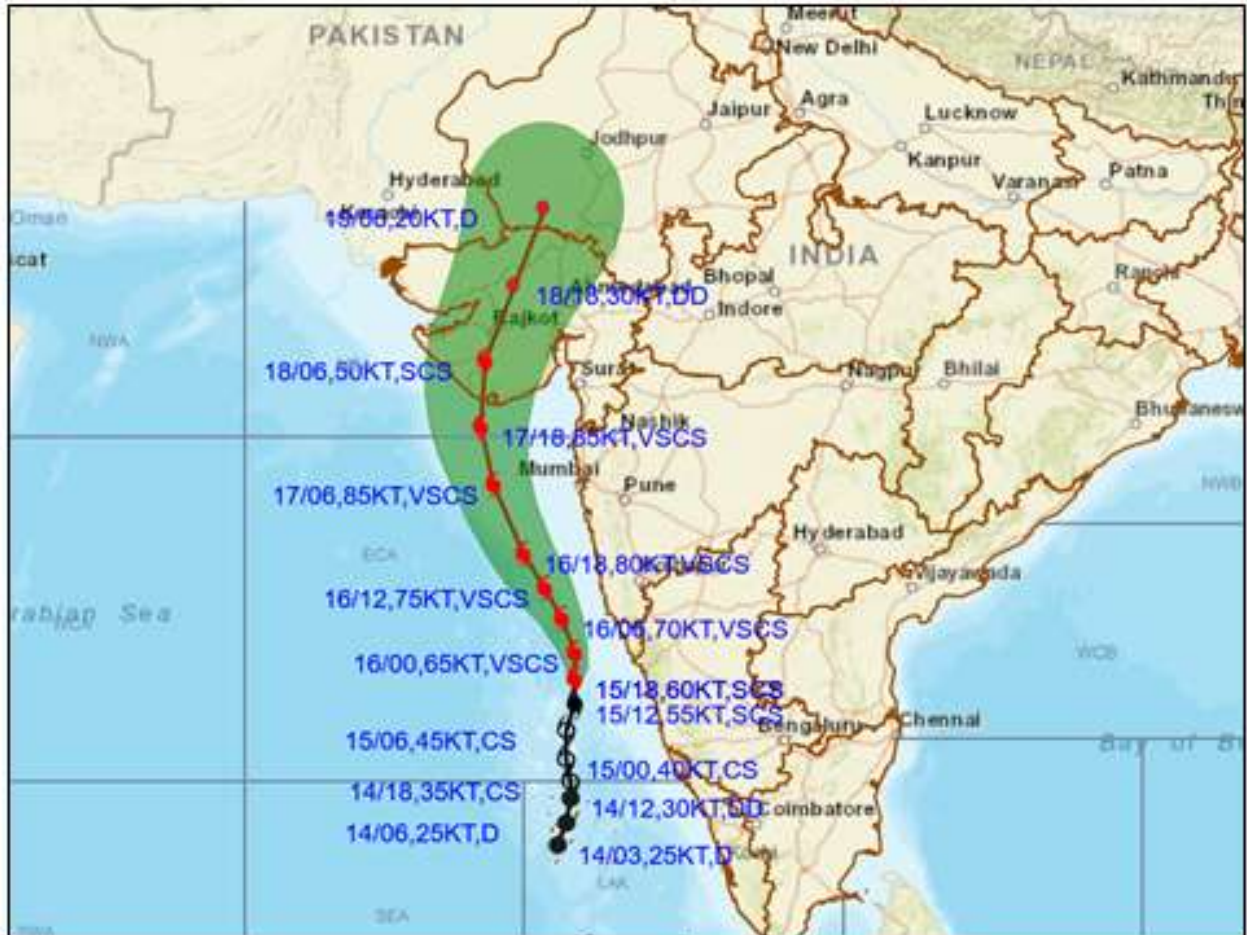
Copy to: ACWC Chennai/ ACWC Mumbai/ MC Goa/ MC Bengaluru/ CWC Ahmedabad/ Thiruvananthapuram.



Spatial rainfall distribution: Isolated: <25%, A few: 26-50%, Many: 51-75%, Most: 76-100%  
Rainfall amount (mm): Heavy rain: 64.5 – 115.5, Very heavy rain: 115.6 – 204.4, Extremely heavy rain: 204.5 or more.



**OBSERVED AND FORECAST TRACK ALONGWITH CONE OF UNCERTAINTY OF SEVERE CYCLONIC STORM "TAUKTAE" OVER EASTCENTRAL ARABIAN SEA BASED ON 1800 UTC OF 15<sup>TH</sup> MAY, 2021**



DATE/TIME IN UTC  
IST=UTC + 0530

L: LOW PRESSURE AREA  
WML: WELL MARKED LOW PRESSURE AREA  
D: DEPRESSION (17-27 KT)  
DD: DEEP DEPRESSION (28-33 KT)  
CS: CYCLONIC STORM (34-47 KT)  
SCS: SEVERE CYCLONIC STORM (48-63 KT)  
VSCS: VERY SEVERE CYCLONIC STORM (64-89 KT)  
ESCS: EXTREMELY SEVERE CYCLONIC STORM (90-119 KT)  
SuCS: SUPER CYCLONIC STORM (≥20 KT)

● LESS THAN 34 KT  
○ 34-47 KT  
● ≥ 48 KT  
— OBSERVED TRACK  
— FORECAST TRACK  
— CONE OF UNCERTAINTY  
AREA OF MAXIMUM SUSTAINED WIND SPEED:  
— 28-33 KT (52-61 KMPH)  
— 34-49 KT (62-91 KMPH)  
— 50-63 KT (92-117 KMPH)  
— ≥ 64 KT (≥118 KMPH)

**IMPACT OVER THE SEA**

| MSW (knot/kmph) | Impact                 | Action                                 |
|-----------------|------------------------|----------------------------------------|
| 28-33 (52-61)   | Very rough seas        | Total suspension of fishing operations |
| 34-49 (62-91)   | High to very high seas | Total suspension of fishing operations |
| 50-63 (92-117)  | Very high seas         | Total suspension of fishing operations |
| ≥ 64 (≥118)     | Phenomenal             | Total suspension of fishing operations |

Spatial rainfall distribution: Isolated: <25%, A few: 26-50%, Many: 51-75%, Most: 76-100%  
Rainfall amount (mm): Heavy rain: 64.5 – 115.5, Very heavy rain: 115.6 – 204.4, Extremely heavy rain: 204.5 or more.